

# PRODUCT DATA SHEET

## MX25S-2SA - 1" DIGITAL FLOW METER WITH STANDARD PULSE

The MX Series 1" DIGITAL FLOW METER are suitable for flows between 6 – 120 L/min (1.59 - 31.70 GPM), providing highly accurate flow measurement performance. The MX Series offers  $\pm 0.5\%$  accuracy of true reading in a compact footprint, requiring no flow conditioning and with high pressure and temperature capabilities.

### Key features include:

- Aluminium (6061) construction
- FEP Encapsulated seals
- Maximum flow rate 120 L/min / 31.70 GPM
- Accuracy of  $\pm 0.5\%$  of reading
- Exceptional repeatability of  $\pm 0.03\%$
- Temperature up to 120 °C / 248 °F
- 1 point factory calibration as standard, with additional points upon request

## SPECIFICATIONS



MX25S-2SA

	MX25S-2SA			
Material of construction	Meter Body	Aluminium (6061)		
	Rotor	Stainless Steel (316)		
	Seals	FEP Encapsulated		
Design Specifications				
Process Connections	1" NPT Thread			
Technical Specifications		min	max	
	Flow rate < 5cPr	10	100	L/min
		2.64	26.42	GPM
	> 5cP	6	120	L/min
		1.59	31.70	GPM
	Non lubricating fluids	-	120	L/min
		-	31.70	GPM
	Operating Temperature Range**	-40	120	°C
		-40	248	°F
	Accuracy (±%)	±0.5%		
Repeatability (±%)	±0.03%			
Nominal K-Factor	36 Pulses/Litre			
	136.31 Pulses/Gallon			

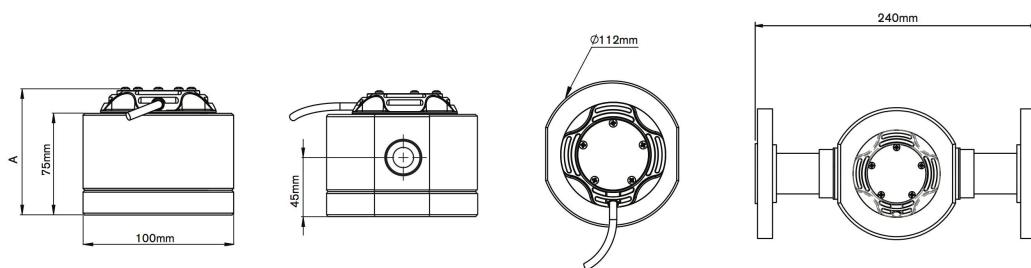
## OUTPUT TYPE



STANDARD PULSE

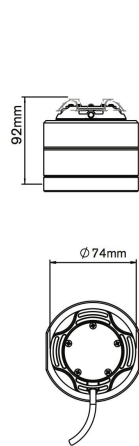
Standard Pulse	
Construction	Polypropylene
IP Rating	IP67
Temp	Min: -40 Max: 120 °C Min: -40 Max: 248 °F
EX Approvals	- Please refer to instruction manual and certification documentation for product appropriate certification information
Display	
Digit size (upper/lower)	-mm/-mm
Accumulated total	×
Resettable total	×
Preset total	×
Flow rate	×
Outputs	
4-20 mA (passive)	×
Pulse/Transistor Output	×
Flow Alarm	×
Batch Control output	×

# PRODUCT DATA SHEET

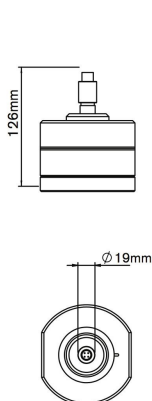


PULSER AND DISPLAY HEIGHT - A

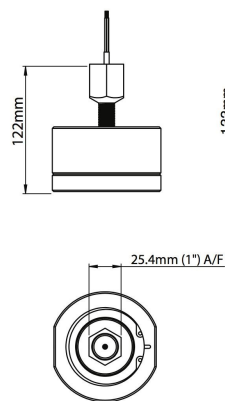
OUTPUT A,I,J,K  
PULSER - Standard



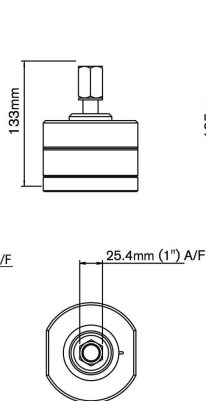
OUTPUT B  
PULSER - Exia



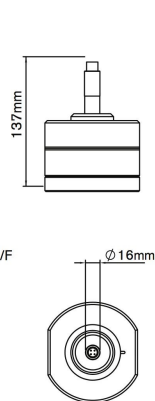
OUTPUT C  
PULSER - EXd



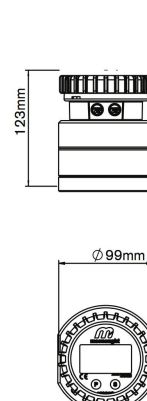
OUTPUT N  
PULSER - Exia



OUTPUT T  
PULSER - High Temp.



OUTPUT D,E  
DISPLAY - LCD 12mm



OUTPUT F,G,H DISPLAY  
- LCD 17mm

